

COPTHORNE HOTEL CAMERON



Valid from 02 Jan - 31 Mar 2020

Superior	Adult			Child		Extension		
	Single	Twin	3rd Adult	CWB	CNB	Sgl / Twin	Extra Bed	CNB
Sun - Thur	185	145	145	139	109	85	35	8
Fri & Sat / School Holidays	225	165	155	149	119	115		
Peak (07, 08 Feb)	375	295	255	249	219	155		
Super Peak (23 Jan - 01 Feb)	415	335	295	289	259	165		

Upgrade to Deluxe - Top-up S\$25 Per Room Per Night

2 Bedroom Apartment	Adult			Child		Extension		
	Triple	Quad	5th Adult (Mattress)	CWB (Mattress)	CNB	Trp / Quad	Extra Bed (Mattress)	CNB
Sun - Thur	155	145	145	139	109	175	35	8
Fri & Sat / School Holidays	185	175	155	149	119	235		
Peak (07, 08 Feb)	325	295	255	249	219	325		
Super Peak (23 Jan - 01 Feb)	365	335	295	289	259	345		

School Holidays: 14 - 22 Mar

Room Surcharge: S\$10/Room/Night | S\$20/Apartment/Night (14 - 22 Mar)

Package Include:

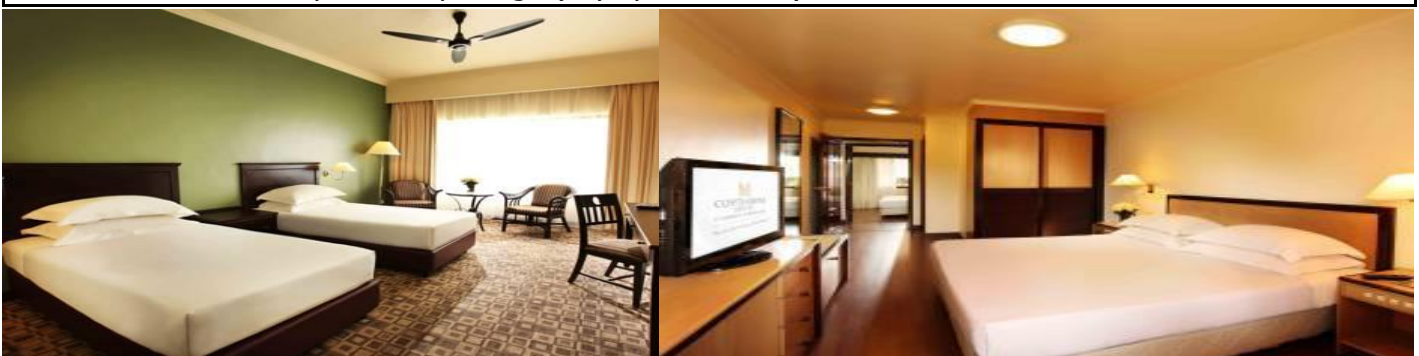
Tour code: CAMFE

- ~ Two way coach transfer Singapore - Cameron Highlands - Singapore by SVIP 26 Seaters Coach
- ~ One night accommodation at Copthorne Hotel Cameron Highlands
- ~ Hotel Buffet Breakfast

Package Exclude:

- ~ Tourism Tax: MYR10 per room per night(Pay upon check-in)

Update by JT, 29 Nov



Coach Schedule

Singapore - Cameron Highlands	2230HRS	Check in@Beach Road The Plaza,#B1-307/308/309 by 2200HRS (Beside 7-Eleven)
Cameron Highlands (Via KL) - Singapore	1000HRS	Assemble@Hotel Lobby 30 Minutes Before Departure